



रेल पहिया कारखाना Rail Wheel Factory  
प्रधान मुख्य सामग्री प्रबंधक का कार्यालय  
Office of the Principal Chief Materials Manager  
यलहंका, बेंगलुरु 560064 / Yelahanka, Bengaluru – 560064

**NOTICE INVITING EXPRESSION OF INTEREST**

Rail Wheel Factory (RWF), located at Yelahanka, Bangalore, invites EXPRESSION OF INTEREST (EOI) for the following activity.

Work	<p>Phase-I, <b>Brief description of work:</b></p> <ol style="list-style-type: none"><li>(1) Excavation, segregation of scrap materials such as, Ferrous skull, Ferrous slag, Graphite materials, other Ferrous &amp; non-Ferrous materials etc., lying buried in mixed condition along with mud, rubbles and other zero value materials, available behind canteen of Rail Wheel Factory, Yelahanka, Bangalore – 560064.</li><li>(2) Processing of Ferrous skull /Ferrous slag other Ferrous materials etc., to 15" size, wherever it is bigger in size</li><li>(3) Recovery of other ferrous, graphite and other materials which are useful to Railways</li><li>(4) shifting of ferrous skull, ferrous slag, other ferrous/non-ferrous materials which are useful to Railways to earmarked locations within the premises.</li><li>(5) Residue of zero value materials shall be shifted to earmarked locations inside the plant premises in the allocated area.</li></ol>
Location	<p>Behind Rail Wheel Factory Staff Canteen as per the location details indicated in the website.</p> <p>Please visit our website for location details, etc @ <a href="http://www.rwf.indianrailways.gov.in">www.rwf.indianrailways.gov.in</a> ---&gt; Department ---&gt; Stores ---&gt; Invitation of Expression of Interest (EOI)-Scrap Segregation.</p>
Last date	10/03/2025
	Firms may inspect and submit their proposal cum budgetary offer.

---Sd---

PRINCIPAL CHIEF MATERIAL MANAGER/RWF

**For details, contact:**

9108501712 – CMM/P

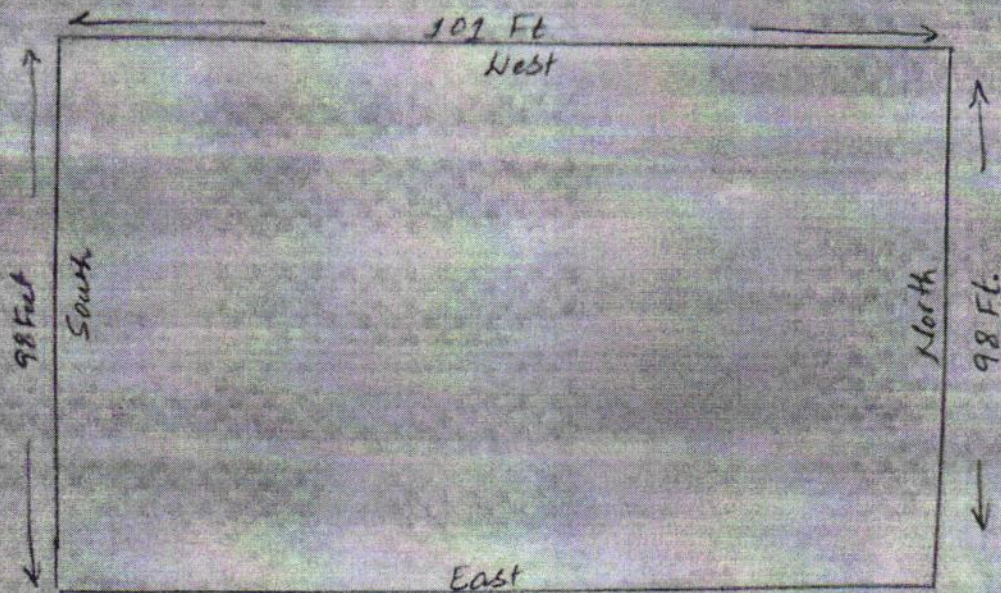
9108501705 – Dy.CMM/Depot

9108501737 – AMM/Depot.



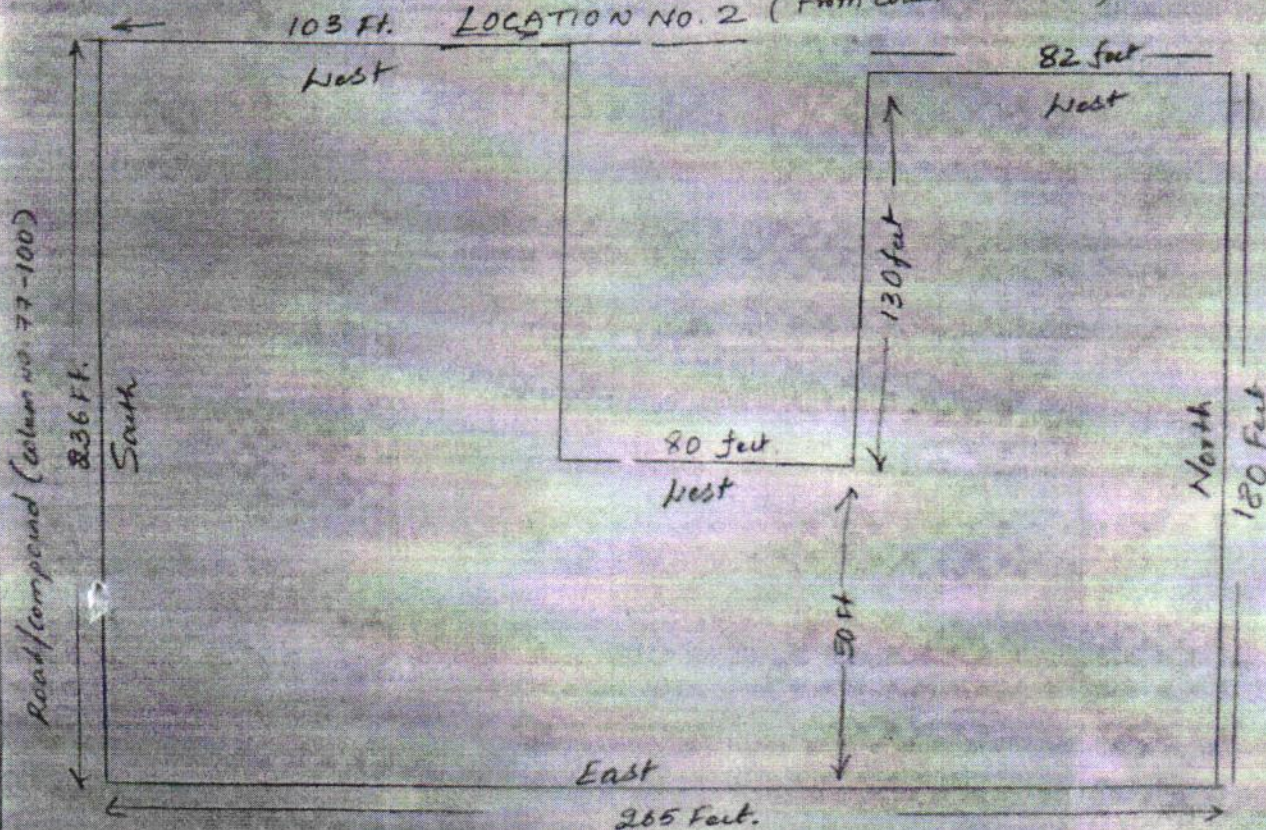
SKULL AREA

Location No. 1 (Column No. 50-59)



← Road/Compound (Column No. 50-59) →  
101 Ft. Total = 9898 Sq Ft. (appr.)

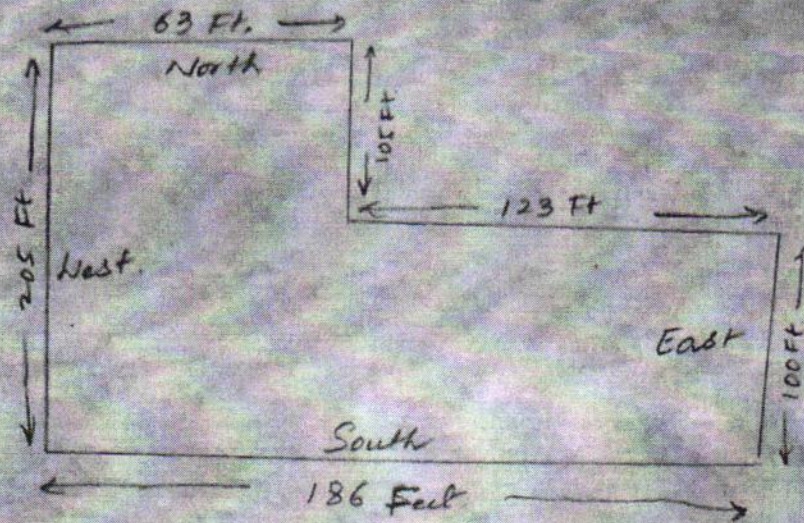
LOCATION NO. 2 (From Column No. 77-100)



Total = 43,068 Sq ft. (approximately)

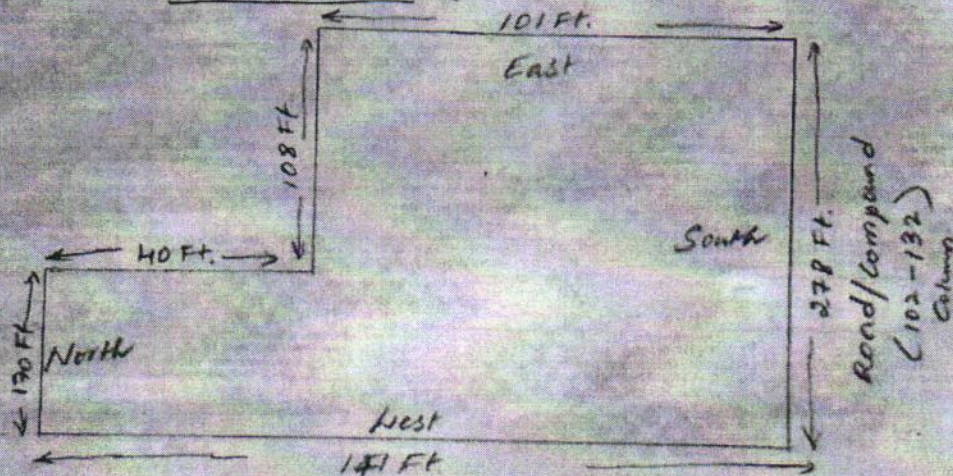


Location No. 3 (Behind Canteen)



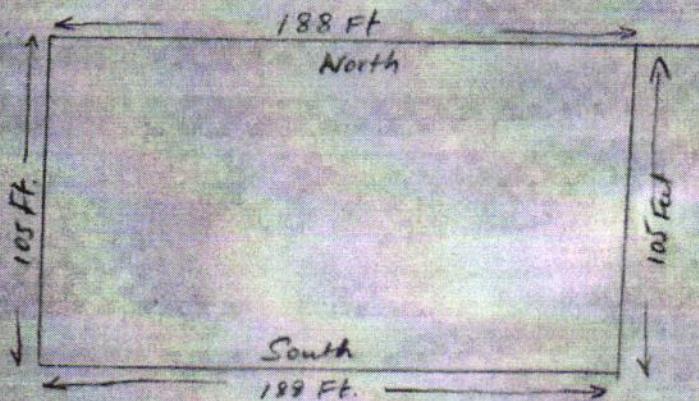
Total = 25,915 Sq. Ft. (Approximately.)

Location No. 4 (From Column No. 102-132)



Total = 34,878 Sq. Ft. (Approximately.)

Location No. 5 (From 140-160)



Total =  
19,740 Sq. Ft.  
(Approximately.)

All 5 Locations?  
Total  
= 1,33,499 Sq. Ft.  
(Approximately.)

Column no. (140-160), Road