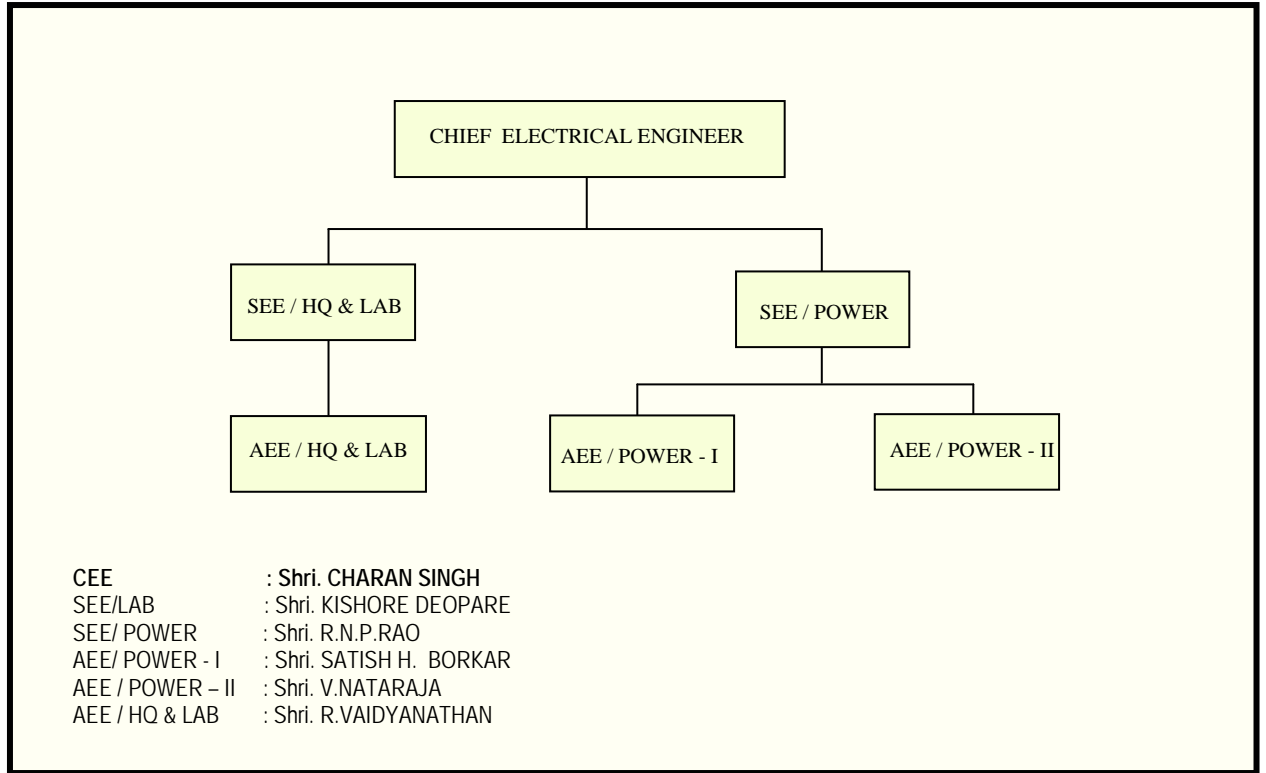


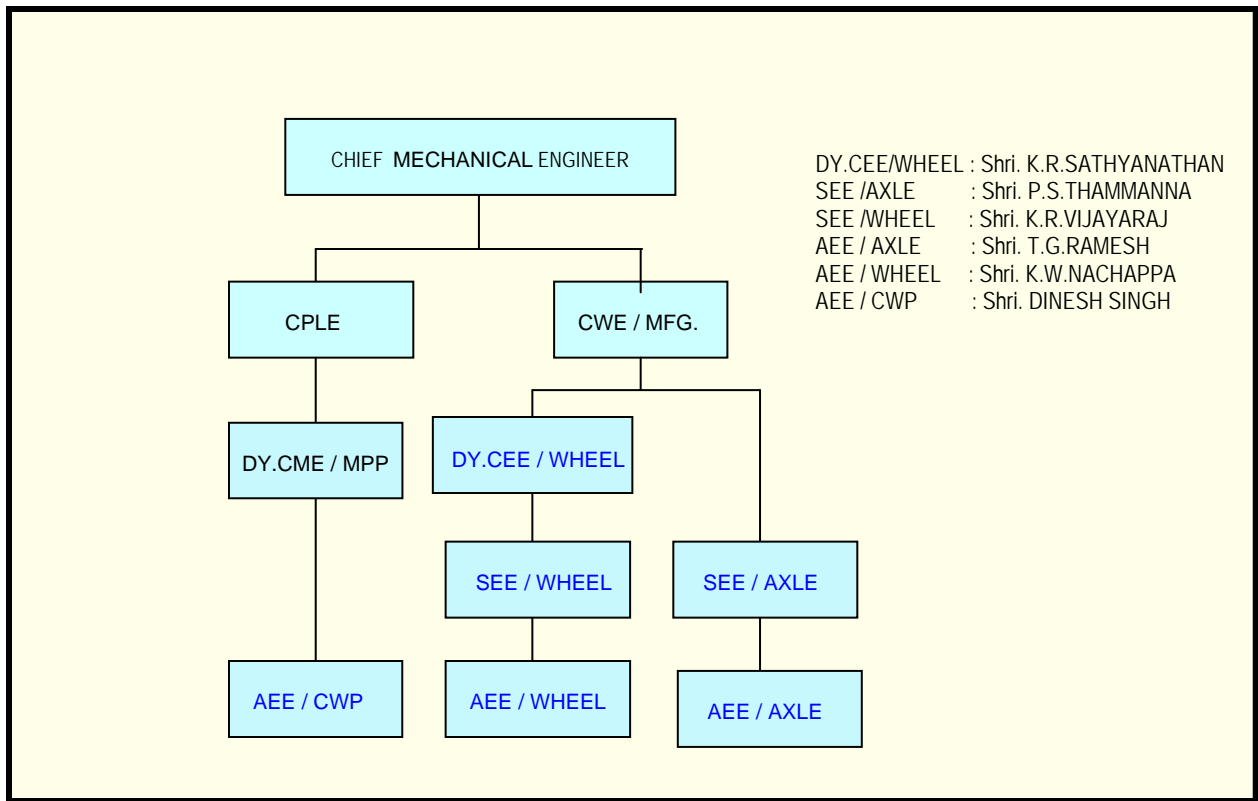
ELECTRICAL ENGINEERING DEPARTMENT

1.0 ORGANIZATION:



Gazetted Cadre of Electrical Department of RWF is as under: Chief Electrical Engineer

| | | |
|--|---|--------------------------|
| Chief Electrical Engineer | : | Shri. CHARAN SINGH |
| Senior Electrical Engineer (Lab) | : | Shri. Kishore D. Deopare |
| Senior Electrical Engineer (Power) | : | Shri R. N. P. Rao |
| Assistant Electrical Engineer (Power/I) | : | Shri. Satish H. Borkar |
| Assistant Electrical Engineer (Power/II) | : | Shri. V. Nataraja. |
| Assistant Electrical Engineer (HQ&Lab) | : | Shri.R.Vaidyanathan |



The Administrative and Technical Control of Control Group with the following establishment is with CME;

| | | |
|---------------------------------------|---|------------------------|
| Dy. Chief Electrical Engineer (Wheel) | : | Shri K.R. Sathyanathan |
| Senior Electrical Engineer (Axle) | : | Shri P.S. Thammanna |
| Senior Electrical Engineer (Wheel) | : | Shri K. R. Vijayaraj |
| Asst. Electrical Engineer (Axle) | : | Shri T.G. Ramesh |
| Asst. Electrical Engineer (Wheel) | : | Shri Nachappa. K.W. |
| Asst. Electrical Engineer (CWP) | : | Shri.Dinesh Singh |

The overall cadre control, of Electrical Department is with CEE.

This is the only Plant having one of the biggest Power Supply System in Indian Railways.